



LED

GS-ZHSTS010

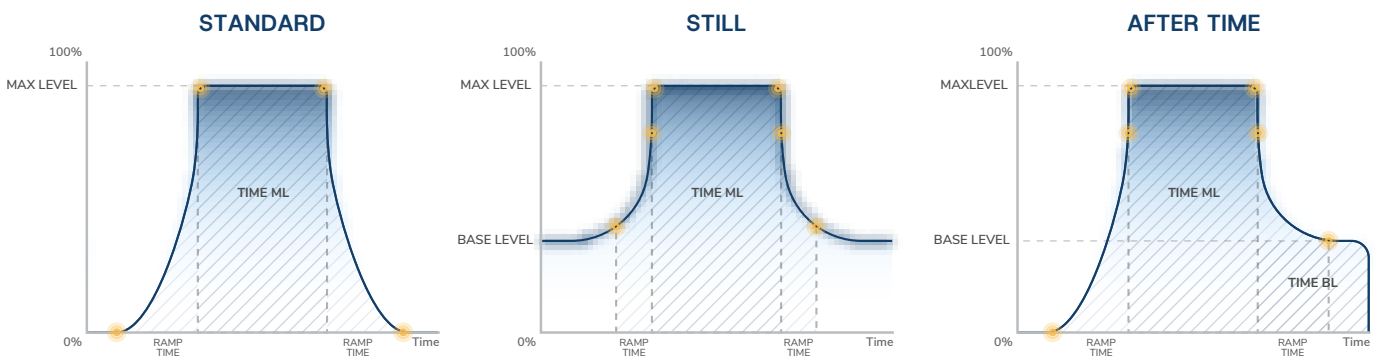
ENERGY SAVING ZHAGA TYPE + LoRa



GSoc ZHAGA + LoRa Compatible, luminaire controller

Plug-and-play for lamps compatible with Zhaga socket (book 18) with full lamp management and feedback functionality.

- › ZHAGA socket (book18)
- › Communications with another devices via LoRa
- › Communications with network via LTE
- › Enables individual remote management, ON / OFF / Dimming of streetlight lamps
- › Specially designed and optimized for BLE Mesh/LORA networks.
- › Autonomous operation based on predefined schedules, light level sensor and light harvesting
- › Adaptive lighting capabilities based on 0-10 V input for motion sensing.
- › Bandwidth efficient with minimal communication requirements.
- › Secure communication based on encryption SHA-256, SHA256 (BLE only), AES256 (BLE Mesh)
- › Advanced data synchronization and notification mechanism
- › Interface for local configuration
- › Management via web applications or mobile applications or remote control
- › Integrated light level sensor



SENSOR TECHNICAL PARAMETERS

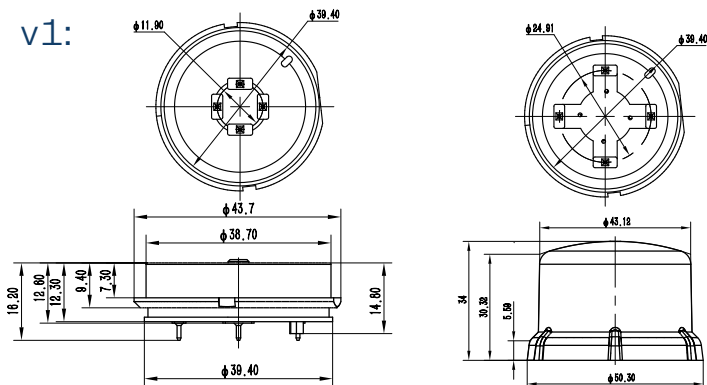
Lamp Type	any with driver 12V AUX DIM 0-10
Maximum lamp power	Depending on the lamp driver
Functions / Operation mode	on/off dimming, motion detection, static detection CCT(dali only), addjustment light harvesting
Dimming range	0%-100% (linear)
White Tunable (CCT suport)	-
Motion Range	0-10m
Static Range	0-4m
Control interface	0-10V
Power supply	12VDC
External interface	BT
Network interface	NB-IoT / LTE / LORA
Supported frequencies	worldwide
Inter-node mesh communication	BLE Mesh / LORA
Firmware update	BLE, LTE
Security	SHA256 (BLE only), AES256 (BLE Mesh)
Average power consumption	0,5W/12V
Maximum power consumption	1W/12V
Real-time lamp operation	YES
Output	0-10V/CCT
Light sensor	Integrated. ALS RGB,CCT, IR
Ingress protection	IP66
Operating temperature range	-30°C to +70°C
Zhaga Cover	IEC61984
Mounting	Zhaga book 18
Base	Zhaga
Control	0-10
Radar	-
GSM	-
LoRa	Yes

LUMINAIRES CONTROL

Control by Smartphone Application or Remote Control,

DIMENSIONS (mm)

v1:



v2:

